



### SHOPPING IN THE MARKETPLACE

Many people combine their visit to the museum with a spot of shopping. The little shops are charmingly laid out, and there is always someone on hand to help you. Some of the products on offer are handmade and typical of the region. If you are coming to the marketplace at Hessenpark just to shop or for a bite to eat, entry to this part of the site is free of charge (except when the plant market and the Christmas market are held). Just let the staff at the ticket office know, and then hit the shops.

### OPENING TIMES

The Hessenpark Open Air Museum is open daily during high season from March to October from 9 a.m. to 6 p.m. Last entry is at 5 p.m. During low season from November to February, we are open on Saturdays, Sundays and public holidays from 10 a.m. to 5 p.m. Last entry is at 4 p.m. The museum is closed on 24 and 31 December (Christmas Eve and New Year's Eve).

### ADMISSION PRICES

Information about our entry prices and available discounts can be found on [www.hessenpark.de](http://www.hessenpark.de).

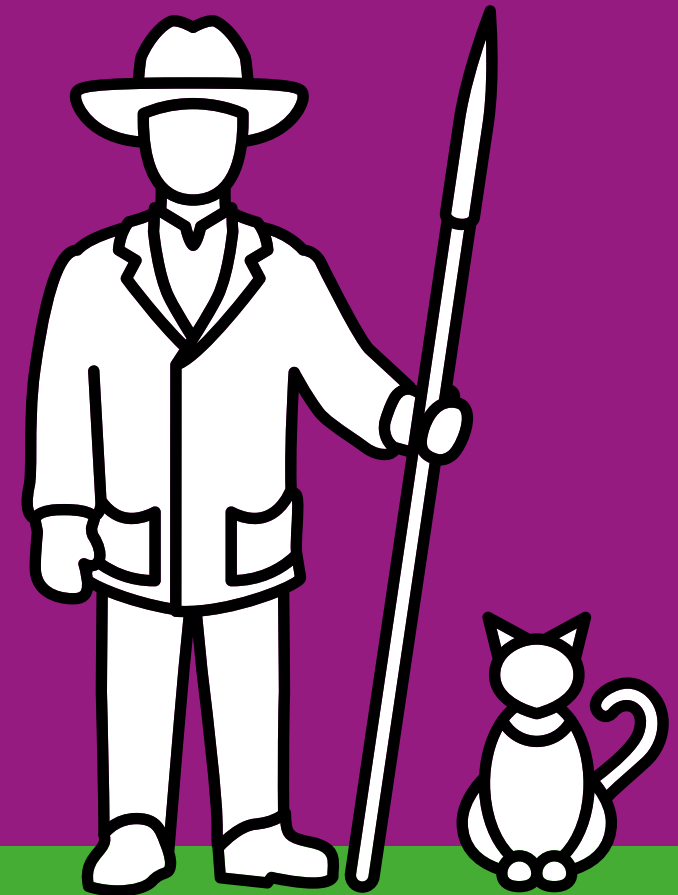
You can book museum tours in the following languages: English, French, Spanish, Turkish and Finnish. The booking team can be contacted by email via [buchung@hessenpark.de](mailto:buchung@hessenpark.de) or by telephone via 06081 588-333.



birgit.mitsche.design

# HESSENPARK OPEN AIR MUSEUM PROGRAMME 2018 JANUARY TO DECEMBER

[www.hessenpark.de](http://www.hessenpark.de)



Hessenpark Open Air Museum  
Laubweg 5, 61267 Neu-Anspach/Taunus  
Tel. 06081 588-0 / E-Mail: [service@hessenpark.de](mailto:service@hessenpark.de)



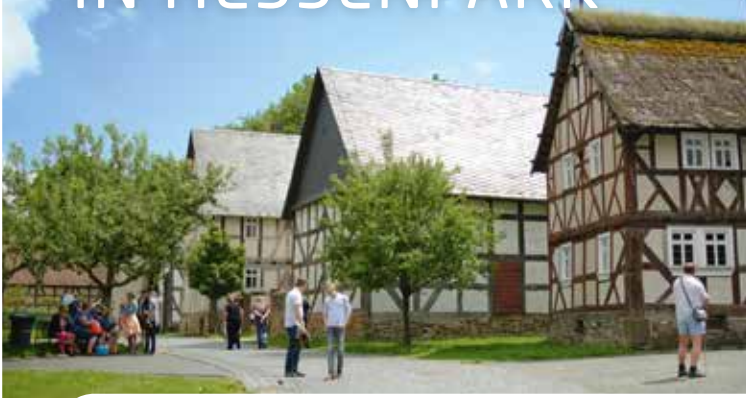
[www.facebook.com/hessenpark](http://www.facebook.com/hessenpark)



[www.instagram.com/hessenpark](http://www.instagram.com/hessenpark)

[www.hessenpark.de](http://www.hessenpark.de)

# OUT AND ABOUT IN HESSEN PARK



## HOUSES WITH STORIES TO TELL

Over a hundred half-timbered houses from five different centuries, situated on the 65-hectare museum estate, invite visitors to discover the everyday life of their past inhabitants. The uncomfortable school benches from the turn of the 20<sup>th</sup> century, the cool walls of the 15<sup>th</sup>-century church, the clattering of crockery in the 1950s' pub and the narrow room in the 18<sup>th</sup>-century smoke house – the homes, churches, workshops, farmsteads and mill buildings stand as contemporary witnesses in wood and stone allowing us to obtain a glimpse of the past.

## A LIVING MUSEUM

Anytime you visit between March and October, there are at least three craft demonstrations taking place daily in the Open Air Museum. By visiting the workshops, you can find out about old techniques and discuss them with the craftspeople. Whilst out and about in the museum grounds, you will encounter our hens, goats, sheep, cows and saddleback pigs. Throughout the year, there are various exhibitions, seasonal events, performances of the museum theatre, presentations and tours. Find out more about our major events for 2018 in our calendar overleaf. A full list of all the activities on offer can be found in our events calendar online on [www.hessenpark.de](http://www.hessenpark.de).

# SPECIAL EXHIBITIONS



## WANDERLUST.

### Two hundred years of walking in the Taunus

In 2018 the Taunusklub, founded in 1868 on the Feldberg, celebrates its 150<sup>th</sup> anniversary. To mark the occasion, the Open Air Museum takes a look at its beginnings as Germany's first hiking club and the cultural history of walking. When and how did the organised walking movement first start? And why did walking, an everyday necessity, become a fashionable sport? This special exhibition, realised in cooperation with the Taunusklub, examines hikers' ideas of nature and displays the equipment used over the years.

4 March to 2 December 2018

## JAKOB NUSSBAUM (1873–1936).

### Frankfurt Impressionist

Jakob Nussbaum was one of the most important Jewish painters to live and work in Frankfurt am Main in the first half of the 20<sup>th</sup> century. His particular passion was impressionist landscape painting which he developed further in his cityscapes. Landscapes were also the focus of his paintings, drawings and watercolours. The exhibition is realised in cooperation with the Jewish Museum Frankfurt. In addition to magnificent artwork there are also original documents and photographs from the artist's estate.

18 March to 2 December 2018



## BROWSING THROUGH OLD PHOTOS.

### Everyday life in Hesse as depicted in Walter Löber's photo archive (1932–1939)

Walter Löber (1906–1968), a beekeeper and carpenter's assistant from Donsbach, acquired a Leica II in 1932 which accompanied him on many trips around Hesse. Löber became an excellent self-taught photographer always on the lookout for a special picture of everyday life. Until the outbreak of the war in 1939, he documented towns and villages, landscapes and people in approximately 3,000 photographs. His archive arrived in the museum in 2017. This special exhibition shows an initial selection of Löber's unknown images.

8 April to 2 December 2018

## BINOCULAR.

### The rise and fall of the twin-lens reflex camera

First launched in 1929, the Rolleiflex camera quickly captured the hearts of photographers around the world. What made it so unique? The second »eye«, the viewfinder lens, allowed photographers to achieve perfect image control for the first time. The viewfinder image on the ground-glass screen corresponded to the size of the negative – both lenses were »focused« at the same time. This type of camera was the preferred instrument of many photojournalists, amateurs and photo studios well into the 1970s. The exhibition showcases the Rolleiflex and its imitators.

29 April 2018 to 14 April 2019



# January



**SUN 11.03.**  
**FAMILY DAY**  
**»CREATURES GREAT AND SMALL«**  
 in cooperation with the Protestant Church in the Hochtaunus. Sheep, donkeys, pigs and doves: Animals in the bible and on the farm take centre stage today.



**SUN 22.04.**  
**FOREST DAY**  
 Join in on various activities, craft demonstrations and forest tours. Find out about historical forestry methods, tree felling and logging. Be sure not to miss draught horses in action!

**SAT – SUN 19.05. – 03.06.**  
**BURNING THE CHARCOAL**

**SUN/MON 20./21.05.**  
**MILL DAYS**  
 On occasion of the »German Mill Day«, our museum mills open their doors for guided tours and milling demonstrations.

**SUN 24.06.**  
**KEEP-FIT DAY**  
 Today's programme invites all to take part in instructed workouts on our Keep-Fit Trail. Our new exhibition modules inform visitors about the history of the German »Keep-Fit movement«.

**SAT – SUN 21. – 29.07.**  
**THE FASCINATION OF METAL CONSTRUCTION SETS**  
 Colourful tin toys to admire and recreate

**MON/TUES 30. – 31.07.**  
**CHILDREN'S WEEK**  
 Historic school lessons, children's tours and lots of activities for all ages

# September



**SAT/SUN 29./30.09.**  
**TRACTOR SHOW AND POTATO STEAMER**  
 300 vintage tractors fill Hessenpark with pistons and horsepower. Also: the famous potato steamer

**SUN 28.10.**  
**THEME DAY »TIME«**  
 On the day when the clocks go back the museum theatre, craft demonstrations and hands-on activities will go on a search for that elusive fellow called »time«.



**SUN 21.01.**  
**»FROM PIG TO SAUSAGE«**  
 Traditional sausage making, cooking and preserving meat in the historical kitchen, craft activities for kids

**SUN 11.03.**  
**FARMERS' MARKET**  
 with regional specialties

**SUN 18.03.**  
**LAUNCH OF SPECIAL EXHIBITION**  
 »Jakob Nussbaum (1873-1936). Frankfurt Impressionist«, 11 a.m.

**SUN 22.04.**  
**FARMERS' MARKET**  
 with regional specialties

**SAT – SUN 28.04. – 13.05.**  
**BUILDING THE CHARCOAL KILN**

**SUN 27.05.**  
**TIMBER FRAME DAY**  
 On show are historical craft techniques and their use in traditional timber framing.

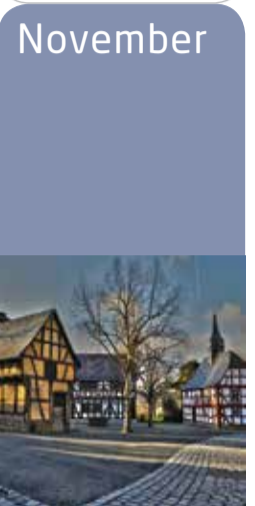
**MON – FRI 25. – 29.06.**  
**HOLIDAY PROGRAMME POTTERY WEEK**  
 Hands-on experience for children

# August



**SAT – SUN 01. – 16.09.**  
**BUILDING THE CHARCOAL KILN**

**SAT/SUN 01./02.09.**  
**PLANT MARKET**  
 Anything and more a gardener might desire for planting in autumn: roses, perennials, bulbs, fruit trees and shrubs.



# February



**SAT/SUN 24./25.03.**  
**EASTER MARKET**  
 Visit our Easter Market with plenty of handicrafts and seasonal offers to get into the holiday spirit.

**MON – SAT 26. – 31.03.**  
**EASTER PROGRAMME**  
 with lots of demonstrations and activities for all ages

**SUN 29.04.**  
**LAUNCH OF SPECIAL EXHIBITION**  
 »Binocular. The rise and fall of the twin-lens reflex camera«, 11 a.m.

**SUN 29.04.**  
**BEER DAY**  
 with brewing demonstrations

**SUN 27.05.**  
**FARMER'S MARKET**  
 with regional specialties

# July



**WED – SUN 01. – 05.08.**  
**CHILDREN'S WEEK**  
 Historic school lessons, children's tours and lots of activities for all ages

**SUN 05.08.**  
**FARMERS' MARKET**  
 with regional specialties

**SUN 09.09.**  
**CLOCKMAKING DAY**  
 The clockmaking school, the tower clock exhibition and the watchmaker workshop are all open today. Craft demonstrations and activities for all ages.

**MON – THURS 01. – 04.10.**  
**HOLIDAY FUN**  
**»THE WOODS ARE FULL OF COLOUR«**  
 Seasonal craft activities, preparing preserves for the winter

**SAT/SUN 06./07.10.**  
**HARVEST FESTIVAL AND AUTUMN MARKET**  
 Experience historical harvesting methods: Period threshing, winnowing and straw rope making machines are on show. Activities for kids, harvest festival services and the Autumn Market with regional products should not be missed.

**SUN 04.11.**  
**»FROM PIG TO SAUSAGE«**  
 Traditional sausage making, cooking and preserving meat in the historical kitchen, craft activities for kids

**SUN 11.11.**  
**FAMILY DAY**  
**»LIGHT AND DARK«**  
 Craft demonstrations and activities in the dark season of the year

**SUN 18.02.**  
**»FROM PIG TO SAUSAGE«**  
 Traditional sausage making, cooking and preserving meat in the historical kitchen, craft activities for kids

# April



# May



**SAT 01.07.**  
**GLASS PRODUCTION IN THE TAUNUS**  
 Craft demonstrations, information and activities

**SAT/SUN 02./03.06.**  
**BOOK PRINTING DAYS**  
 Watch and join in with setting, printing, book-binding, paper-making and wood-turning

**TUES – THURS 10. – 12.07.**  
**HOLIDAY WATER FUN**  
 Get the washing done, just like our ancestors!

**SUN 12.08.**  
**»VOLUNTEERS OF HESSENPAK« ACTION DAY**  
 Volunteers present the diverse fields of museum work they are involved in: crafts, technology, visitor and exhibition services.

**SAT/SUN 15./16.09.**  
**FOREST RANGER CAMP**  
 Travel back in time to the forest and camp life of the 18<sup>th</sup> century.

**SAT/SUN 13./14.10.**  
**OPENING THE CHARCOAL KILN**

**SAT/SUN 13./14.10.**  
**GERMAN PERFORMANCE PLOUGHING CHAMPIONSHIPS**  
 for horse teams in cooperation with the IG Zugpferde e.V.

# December



# March



**SUN/MON 01./02.04.**  
**EASTER PROGRAMME**  
 with lots of demonstrations and activities for all ages

**SUN 04.03.**  
**LAUNCH OF SPECIAL EXHIBITION**  
 »Wanderlust. Two hundred years of walking in the Taunus«, 11 a.m.

**SUN 08.04.**  
**LAUNCH OF SPECIAL EXHIBITION**  
 »Browsing through old photos. Everyday life in Hesse as depicted in Walter Löber's photo archive (1932-1939)«, 11 a.m.

**SAT/SUN 05./06.05.**  
**PLANT MARKET**  
 With gardening season bursting into bloom, one hundred regional and international horticulturalists transform the museum into a vast sea of plants.

**SUN 10.06.**  
**CHARCOAL BURNING DAY**  
 Charcoal and its many uses are presented in celebration of the 55<sup>th</sup> opening of our charcoal kiln: forging, drawing, fire making, washing, cooking and barbecuing.

**SUN 13.05.**  
**OPENING OF THE RECHTENBACH GARDEN NURSERY**  
 11 a.m.

**SUN 17.06.**  
**FAIRYTALE DAY**  
 Today, the museum is transformed into an enchanted world of fairytales with theatrical performances, storytelling, themed tours and wonderful activities.

**SAT 14.07.**  
**OPENING THE »WHEEL OF THE SENSES«**  
 The various surfaces of our brand new attraction are best explored barefoot. 12 noon

**SUN 15.07.**  
**PRINTING APPRENTICES' CEREMONY**  
 2.30 p.m.

**TUES – THURS 17. – 19.07.**  
**HOLIDAY FUN**  
**»TRAVELLING THE PAST«**  
 Working, eating, sleeping and living – welcome to days gone by!

**SAT 18.08.**  
**OPENING OF THE TEXTILE CRAFTS BUILDING**  
 11 a.m.

**SAT/SUN 18./19.08.**  
**GETTING CLOSE TO WOOL, HEMP AND FLAX**  
 A weekend of textiles, with a fabric market, craft demonstrations and hands-on-activities

**SUN 26.08.**  
**PUB FESTIVAL IN THE MARTINS'S TAVERN**  
 All about beer brewing! With accompanying music programme.

**SUN 16.09.**  
**FARMER'S MARKET**  
 with regional specialties

**SUN 23.09.**  
**LIGHTING THE CHARCOAL KILN**  
 11 a.m.

**SUN – SUN 23.09. – 07.10.**  
**BURNING THE CHARCOAL**

**SUN 14.10.**  
**FARMER'S MARKET**  
 with regional specialties

**SAT/SUN 20./21.10.**  
**APPLE FESTIVAL WITH APPLE MARKET**  
 Historical apple press demonstration with bar, live music, fruit trail, apple and fruit meadow tours and a colourful Apple Market all await visitors.

**SAT/SUN 01./02.12.**  
**ADVENT MARKET**  
 Over 100 stalls with unique crafts and culinary delights, a varied supporting programme, music and lots of activities for all ages make this market one of the most beautiful in the region. 10 a.m. – 7 p.m.

**SUN 04.03.**  
**LAUNCH OF SPECIAL EXHIBITION**  
 »Wanderlust. Two hundred years of walking in the Taunus«, 11 a.m.

**SUN 13.05.**  
**OPENING OF THE RECHTENBACH GARDEN NURSERY**  
 11 a.m.

**SAT 19.05.**  
**LIGHTING THE CHARCOAL KILN**  
 11 a.m.

**SUN 17.06.**  
**FAIRYTALE DAY**  
 Today, the museum is transformed into an enchanted world of fairytales with theatrical performances, storytelling, themed tours and wonderful activities.

**TUES – THURS 17. – 19.07.**  
**HOLIDAY FUN**  
**»TRAVELLING THE PAST«**  
 Working, eating, sleeping and living – welcome to days gone by!

**SUN 23.09.**  
**LIGHTING THE CHARCOAL KILN**  
 11 a.m.

**SUN – SUN 23.09. – 07.10.**  
**BURNING THE CHARCOAL**

**SUN 26.08.**  
**PUB FESTIVAL IN THE MARTINS'S TAVERN**  
 All about beer brewing! With accompanying music programme.

**SUN 16.09.**  
**FARMER'S MARKET**  
 with regional specialties

**SUN 23.09.**  
**LIGHTING THE CHARCOAL KILN**  
 11 a.m.

**SUN – SUN 23.09. – 07.10.**  
**BURNING THE CHARCOAL**

**SUN 14.10.**  
**FARMER'S MARKET**  
 with regional specialties

**SAT/SUN 20./21.10.**  
**APPLE FESTIVAL WITH APPLE MARKET**  
 Historical apple press demonstration with bar, live music, fruit trail, apple and fruit meadow tours and a colourful Apple Market all await visitors.

**SAT/SUN 15./16.12.**  
**REWE-CHRISTMAS MARKET**  
 Numerous stalls offer tasty delights and original gift items. And Christmas trees are for sale. 12 noon – 8 p.m.

